

DRAWING No. 42940 - P  
 ISSUE THE DRAWING AND DESIGN ARE THE PROPERTY OF WESTWIND AIR BEARINGS. THEY REMAIN AT ALL TIMES THEIR PROPERTY AND MUST NOT BE USED TO THE DETRIMENT OF THEIR INTERESTS.

DO NOT SCALE DRAWING

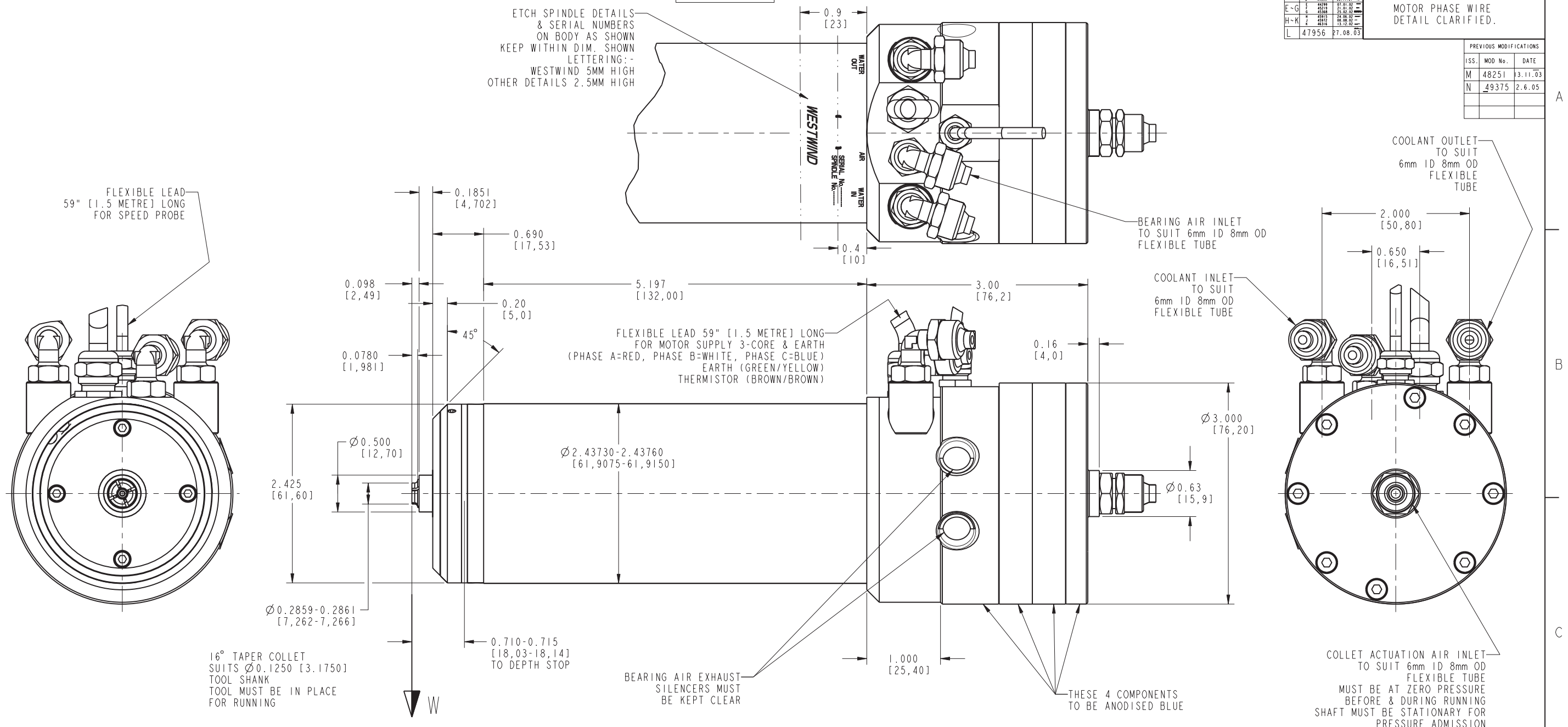
PROJECTION IF IN DOUBT ASK

DO NOT SCALE DRAWING

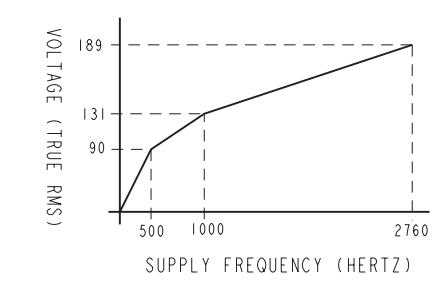
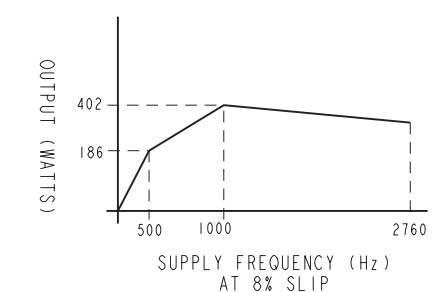
ISS.	MOD No.	DATE	MODIFICATION	ISSUE
	50065	30.9.05		P

MOTOR PHASE WIRE  
 DETAIL CLARIFIED.

ISS.	MOD No.	DATE
M	48251	3.11.03
N	49375	2.6.05



BASIC SPECIFICATION	IMPERIAL UNITS		METRIC UNITS	
BEARING AIR SUPPLY PRESSURE	80	P.S.I.G.	5.6	Kg/cm <sup>2</sup>
AIR CONSUMPTION DYNAMIC	2.6	S.C.F.M.	74	Litres/min
COOLING WATER FLOW	20	IMP. GALL/Hr	1.52	Litres/min
COOLING OIL FLOW	40	IMP GAL/Hr	3.03	Litres/min
MAXIMUM HEAT DISSIPATION TO COOLING FLUID	1530	BTU/HOUR	450	WATTS
COOLING FLUID INLET TEMPERATURE	16 - 20 °C			
RADIAL FAILURE LOAD AT W (AT 20,000 RPM)	15	lbf	6.75	Kgf
AXIAL FAILURE LOAD (PUSH)	40	lbf	18.2	Kgf
SPEED RANGE	20,000 - 160,000 RPM			
COLLET ACTUATION PRESSURE	80	P.S.I.G.	5.6	Kg/cm <sup>2</sup>
MAXIMUM AXIAL ACCELERATION	45g	(DERIVED THEORETICAL MAXIMUM)		
ADDITIONAL DETAILED INFORMATION IS AVAILABLE ON REQUEST				



GEOMETRIC TOLERANCE SYMBOLS		LIMITS		SIGNED	DATE	TITLE	PRODUCT	DRAWING No.	ISSUE
CHARACTERISTIC	SYM	CHARACTERISTIC	SYM						
STRAIGHTNESS	—	CYLINDRICITY	⊘	DRAWN	SEF 19.2.01	PROVISIONAL OUTLINE	D1722-03	42940	- P
ROUNDNESS	⊖	SQUARENESS	⊥	CHECKED	SEF 19.2.01				
PARALLELISM	∥	CONCENTRICITY	⊙	DESIGN APPROVAL	JDS 19.2.01				
ANGULARITY	∠	SYMMETRY	≡	APPLICATION APPROVAL	-				
RUN OUT	↗	FLATNESS	▭						
TOTAL RUN OUT	↗	POSITION	⊕						