

DRAWING No. 45120 - F
 ISSUE THE DRAWING AND DESIGN ARE THE PROPERTY OF WESTWIND AIR BEARINGS. THEY REMAIN AT ALL TIMES THEIR PROPERTY AND MUST NOT BE USED TO THE DETRIMENT OF THEIR INTERESTS.

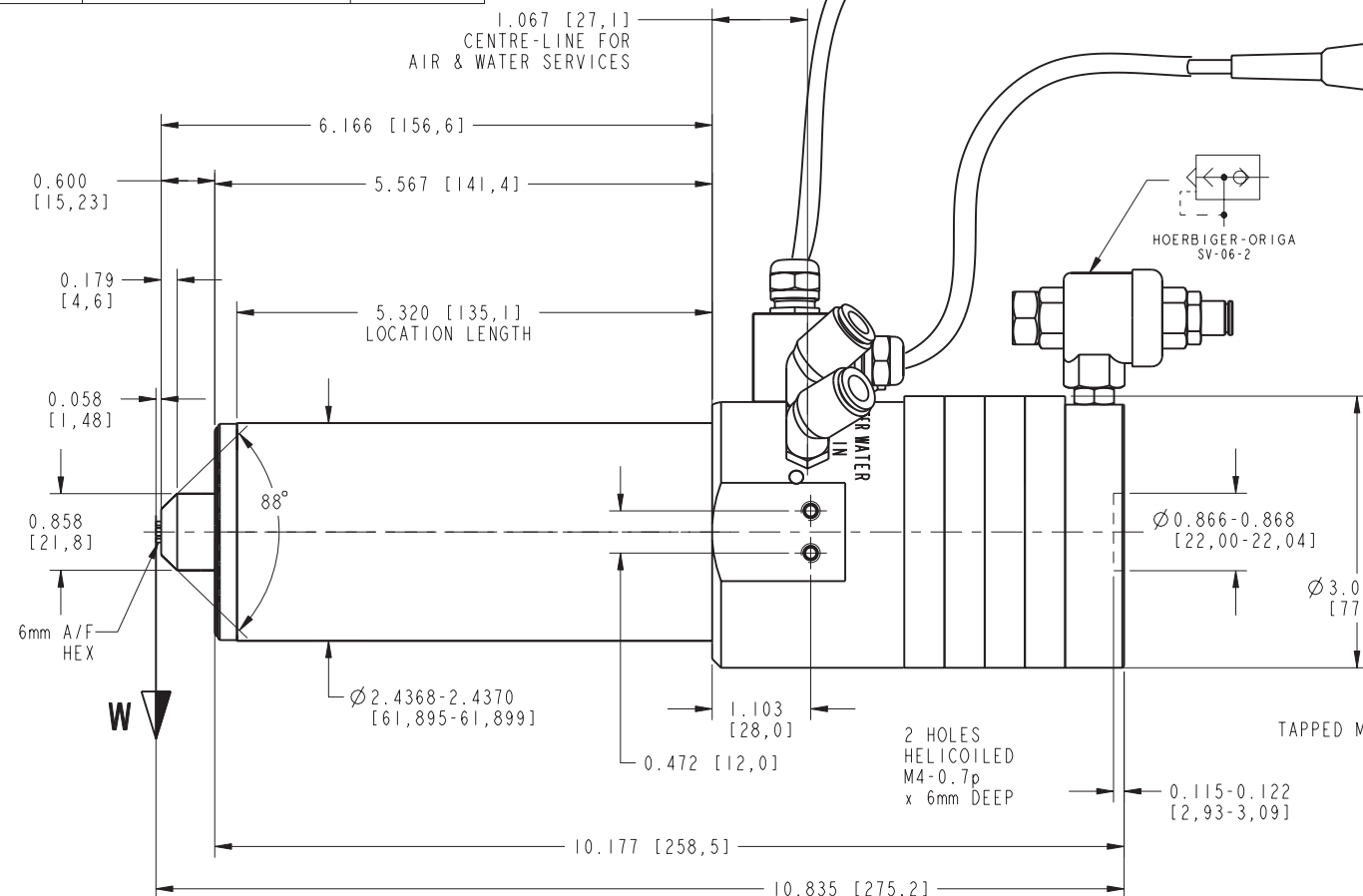
DO NOT SCALE DRAWING

PROJECTION IF IN DOUBT ASK

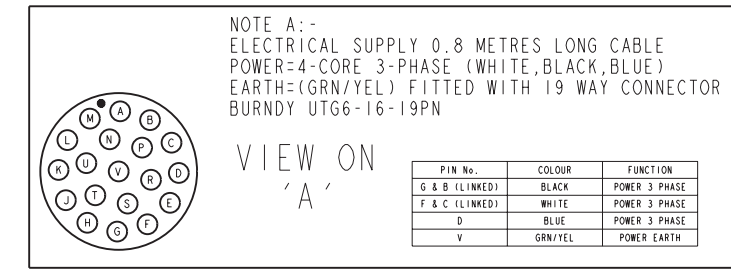
DO NOT SCALE DRAWING

PREVIOUS MODIFICATIONS	MOD No.	DATE	MODIFICATION	ISSUE
ISS.	MOD No.	DATE		
C	14.5.03			
D	31.5.06			
E	15.6.06			
			SPEC TABLE UPDATED	

CUSTOMER APPROVAL	SIGNED	DATE



COLLET ACTUATION AIR INLET TO SUIT 6mm O/D 4mm I/D FLEXIBLE TUBING FITTED WITH A BLUE IDENTIFICATION RING. MUST BE AT ZERO PRESSURE BEFORE & DURING RUNNING. SHAFT MUST BE STATIONARY BEFORE PRESSURE ADMISSION

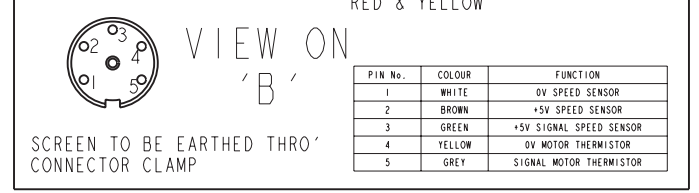


COOLANT INLET & OUTLET TO SUIT 8mm OD 6mm ID FLEXIBLE TUBING

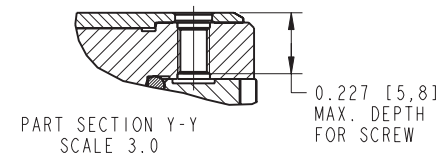
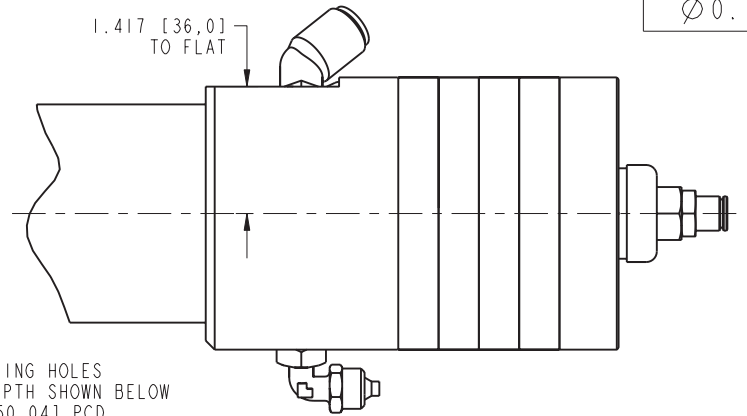
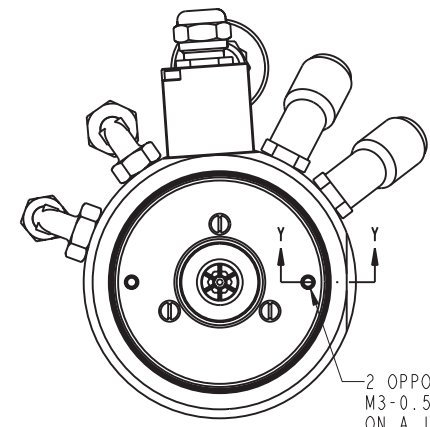
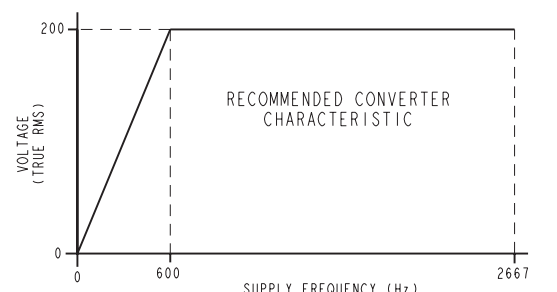
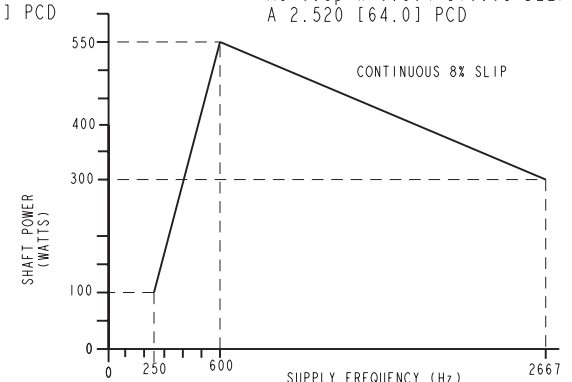
BEARING AIR SUPPLY TO SUIT 8mm OD 6mm I/D FLEXIBLE TUBING

EXHAUST OUTLET TO SUIT 8mm OD 6mm ID FLEXIBLE TUBING

NOTE B:- 5-CORE SCREENED LEAD FOR INSTRUMENTATION 0.8M LONG SPEED SENSOR SIEMENS FP212L100-2 BLUE & GREEN TO +5V SUPPLY WHITE SIGNAL MOTOR THERMISTOR SIEMENS P317-M135 (PTC) RED & YELLOW



COLLET SIZE	W.W. PART No.
Ø0.125"	48189



BASIC SPECIFICATION	IMPERIAL UNITS	METRIC UNITS
BEARING AIR SUPPLY PRESSURE	80 P.S.I.G.	5.4 BAR
AIR CONSUMPTION AT 80 P.S.I.G. (STATIC)	3.2 S.C.F.M.	91 Litres/min
AIR CONSUMPTION AT 80 P.S.I.G. (dynamic @ 150K)	2.7 S.C.F.M.	78 Litres/min
COOLING WATER FLOW	19.8 IMP. GALL/Hr	1.5 Litres/min
COOLING FLUID INLET TEMPERATURE		18 ± 1 °C
MAX. HEAT DISSIPATION TO COOLING WATER	1775 BTU/HOUR	520 WATTS
RADIAL FAILURE LOAD AT W (AT 150,000 RPM)	24 lbf	10.9 Kgf
RADIAL STIFFNESS FROM AIR FILM IN PLANE W (AT 150,000 RPM)	90,000 lbs/inch	1.6 Kg/micron
AXIAL FAILURE LOAD (PUSH)	55 lbf	25 Kgf
COLLET TORQUE (NEW)	30 lbf.in	0.35 Kg.m
MAXIMUM INPUT SPEED		160,000 RPM
COLLET ACTUATION PRESSURE	72-82 P.S.I.G.	5.5-5.8 Kg/cm ²
APPROX. WEIGHT	12 lb	5.45 Kg
CONTINUOUS POWER @ 8% SLIP		550 WATTS @ 600Hz

ADDITIONAL DETAILED INFORMATION IS AVAILABLE ON REQUEST

GEOMETRIC TOLERANCE SYMBOLS	LIMITS	SIGNED	DATE	TITLE	PRODUCT	DRAWING No.	ISSUE
CHARACTERISTIC SYM CHARACTERISTIC SYM	NOMINAL UNLESS STATED						
STRAIGHTNESS		DRAWN	06.02.03	PROVISIONAL	D1750-02	45120 - F	
ROUNDNESS		CHECKED	--	OUTLINE			
PARALLELISM		DESIGN APPROVAL	--				
ANGULARITY		APPLICATION APPROVAL	--				
TOTAL RUN OUT							